



R11.20 -3.0%



R15.45 -2.9%



R17.11 -0.7%

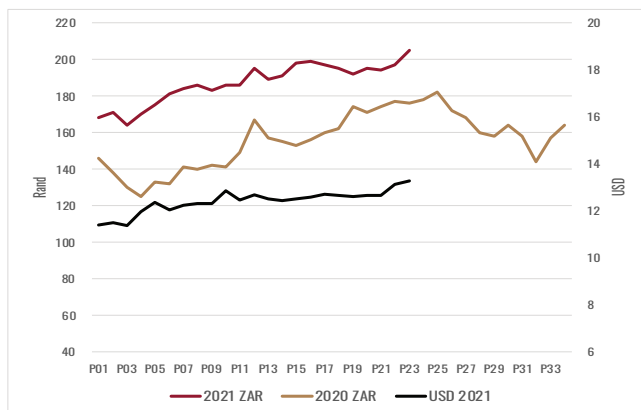


8 078 BLS

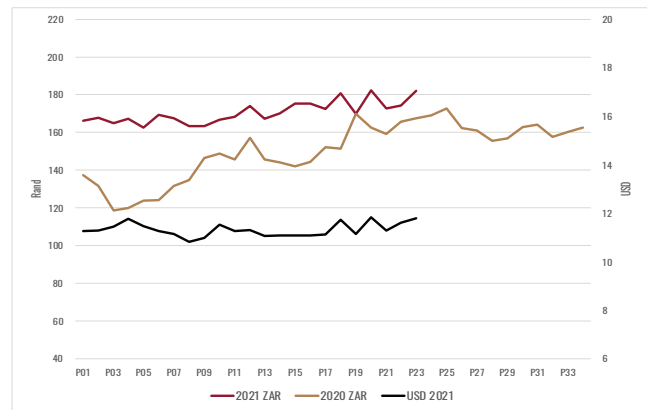
MICRON	17μ	18μ	18.5μ	19μ	19.5μ	20μ	20.5μ	21μ	22μ
AUS ZAR	300.72 +4.2%	244.72 +3.6%	215.60 +3.0%	191.52 +2.4%	174.16 +2.3%	160.72 +2.6%	155.68 2.2%	150.64 +1.9%	147.28 +2.2%
NON-RWS	295.00 +2.0%	247.00 +3.2%	226.00 +3.5%	197.00 +1.5%	174.00 +1.1%	162.00 +1.8%	158.00 +2.5%	154.00 +2.0%	148.00 +0.7%
RWS Certified	320.00 +3.5%	281.00 +1.1%	260.00 +2.0%	239.00 +1.7%	218.00 +1.0%	200.00 +3.0%	193.00 +2.6%	188.00 +3.7%	179.00 +4.0%
RWS PREMIUMS	8.5%	13.8%	15.0%	23.2%	26.2%	25.8%	25.3%	24.5%	21.8%

White Wool Market Indicator 22.0μ 132.00 23.0μ 121.00

## RWS 2 YEAR TREND



## NON-RWS 2 YEAR TREND



BUYERS LIST	CAT23	& SHARE	BALES (YTD)
Modiano SA	2 484	31.82%	51 405
Standard Wool SA	2 259	28.94%	44 605
Lempriere SA	1 468	18.81%	43 096
Tianyu	795	10.18%	27 175
Segard Masurel SA	469	6.01%	9 266
Stukcken & Co	295	3.78%	20 317
New England SA	36	0.46%	2 713

BROKER LIST	CATALOGUE OFFERING	SOLD (YTD)
BKB	5 787	121 239
CMW	2 323	56 980
JLW	-	3 733
MAS	-	9 204
QWB	-	7 388
VLB	-	3 485

TOP 5	PRODUCER	
R265.00	JMP Webber, Albany	RWS
R248.80	GH Byers, Aliwal North	RWS
R243.00	SJ van der Walt, Adelaide	RWS
R238.10	SJ van der Walt, Adelaide	RWS
R225.10	JT Turner, Alexandria	RWS

## COMMENTS

The market followed currency and recorded gains overall micron groups. The next sale, CAT24, is scheduled for the 9th of March 2022, but this could change due to continuing logistical issues experienced by wool exporters.