



R10.90 +1.1%



R14.45 +2.3%



R16.07 +0.93%

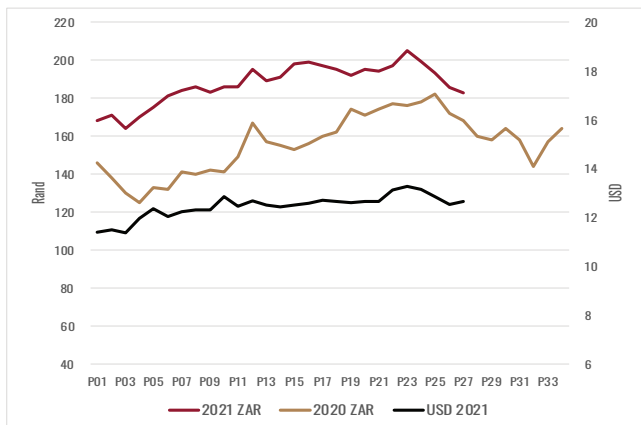


5 777 BLS

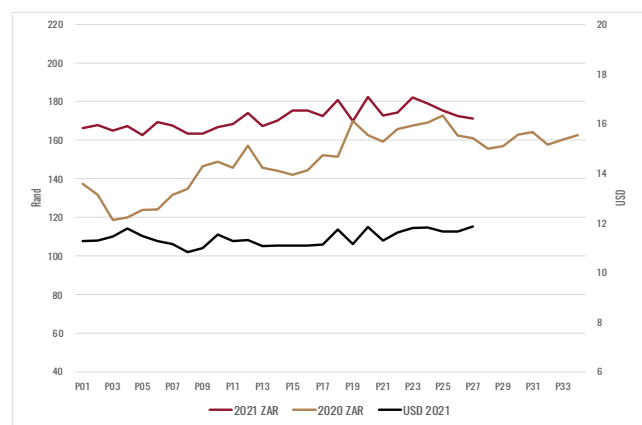
MICRON	17μ	18μ	18.5μ	19μ	19.5μ	20μ	20.5μ	21μ	22μ
AUS ZAR	282.31 -0.8%	230.54 -1.6%	206.56 -1.8%	183.12 -1.6%	165.68 -1.1%	150.42 -1.9%	145.25 -1.8%	140.07 -1.6%	137.89 0.0%
NON-RWS	275.00 +1.5%	227.00 -3.1%	206.00 -2.4%	185.00 +0.5%	166.00 +0.6%	153.00 -0.6%	147.00 +0.7%	140.00 -0.7%	138.00 0.0%
RWS Certified	288.00 -3.1%	254.00 +1.5%	232.00 -3.4%	217.00 -1.8%	195.00 -4.1%	178.00 -2.8%	169.00 -0.6%	165.00 -0.6%	156.00 0.0%
RWS PREMIUMS	4.7%	11.9%	12.6%	17.3%	17.5%	16.3%	15.0%	17.9%	13.0%

White Wool Market Indicator 22.0μ 117.00 23.0μ 112.00

RWS 2 YEAR TREND



NON-RWS 2 YEAR TREND



BUYERS LIST	Cat27	& SHARE	BALES (YTD)
Modiano SA	1 505	27.67%	60 555
Standard Wool SA	1 308	24.04%	52 137
Lempriere SA	1 114	20.48%	49 992
Tianyu	699	12.85%	32 063
Stucken & Co	578	10.63%	23 295
Segard Masurel SA	155	2.85%	10 707
New England SA	81	1.49%	3 150

BROKER LIST	CATALOGUE OFFERING	SOLD (YTD)
BKB	4 268	141 671
CMW	2 041	66 108
JLW	-	4 042
MAS	-	11 017
QWB	-	8846
VLB	-	4 113

TOP 5	PRODUCER
R201.00	Stofkraal Besigheid Trust, Trompsburg RWS
R198.60	Bonnievale Boerdery (EDMS) Bpk, Fraserburg RWS
R198.10	Stofkraal Besigheid Trust, Trompsburg RWS
R196.30	Brighton Farming (PTY) LTD, Streytlerville RWS
R191.90	Stofkraal Besigheid Trust, Trompsburg RWS

COMMENTS

Compared to last week's drop, the market stabilised with a slight downward movement caused by a stronger Rand. The next sale, CAT28, will take place on the 6th of April 2022; approximately +/- 7 447 bales will be on sale.