



R11.19 +0.4%



R16.05 -1.6%



R16.92 -1.9%

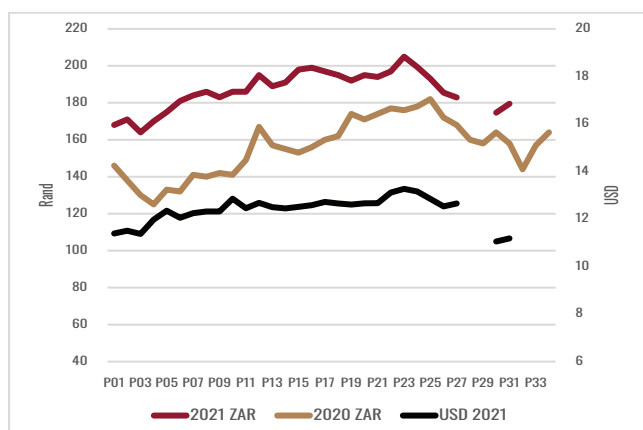


8 996 BLS

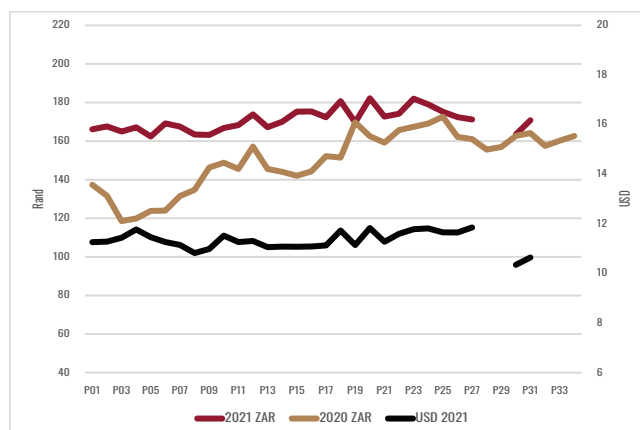
MICRON	17μ	18μ	18.5μ	19μ	19.5μ	20μ	20.5μ	21μ	22μ
AUS ZAR	303.81 +1.5%	250.66 +1.5%	222.12 +1.7%	195.27 +1.7%	175.68 +0.9%	161.70 +1.4%	157.22 +1.3%	152.74 +1.1%	149.95 +1.1%
NON-RWS	288.00 +5.2%	249.00 +7.6%	229.00 +11.4%	193.00 +6.2%	176.00 +6.3%	165.00 +9.1%	157.00 +7.0%	156.00 +8.3%	148.00 +6.8%
RWS Certified	308.00 +3.2%	260.00 +3.8%	240.00 +3.7%	216.00 +2.3%	202.00 +5.5%	176.00 +3.4%	168.00 +3.0%	162.00 +2.5%	155.00 +3.2%
RWS PREMIUMS	6.9%	4.4%	4.8%	11.9%	14.8%	6.7%	7.0%	3.8%	4.7%

White Wool Market Indicator 22.0μ 133.00 23.0μ 123.00

RWS 2 YEAR TREND



NON-RWS 2 YEAR TREND



BUYERS LIST	Cat31	& SHARE	BALES (YTD)
Modiano SA	2 950	40.21%	69 518
Standard Wool SA	1 778	24.23%	57 593
Tianyu SA	831	11.33%	34 919
Lempriere SA	789	10.75%	52 599
Segard Masurel SA	652	8.89%	12 416
New England SA	176	2.40%	3 650
Stucken & Co	161	2.19%	23 861

BROKER LIST	CATALOGUE OFFERING	SOLD (YTD)
BKB	7 658	157 717
CMW	1 811	73 345
JLW	254	4 735
MAS	649	13 438
QWB	-	9 983
VLB	-	4 660

TOP 5	PRODUCER	
R273.00	Bertie Swanepoel Trust, Smithfield	RWS
R264.10	Cawthorn Farming Trust, Stutterheim	RWS
R260.20	J van Vuuren, Adelaide	RWS
R260.00	RM Small, Barkly East	RWS
R256.00	Zuurbron Bdy (EDMS), BPK, Luneburg	RWS

COMMENTS

Excellent sales percentage despite export bans. 18 micron and finer performed excellently. The next sale, CAT32, will take place on the 18th of May 2022; approximately +/- 8 513 bales will be on sale.