



R11.00 +1.3%



R15.35 +1.0%



R16.41 +1.14%



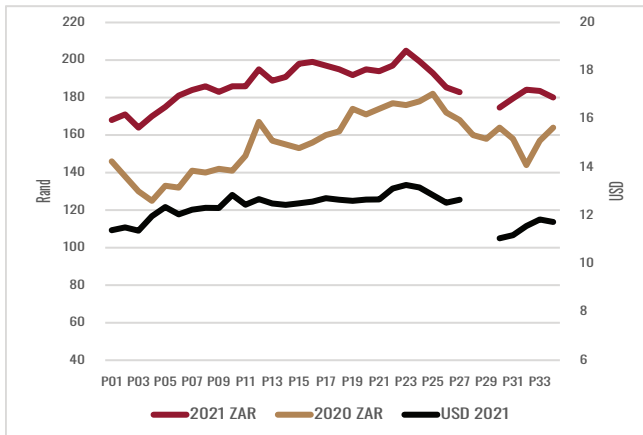
10 340 BLS

MICRON	17μ	18μ	18.5μ	19μ	19.5μ	20μ	20.5μ	21μ	22μ
AUS ZAR	305.25 0.0%	245.85 -0.9%	221.10 -0.7%	194.15 +0.5%	174.35 0.0%	161.15 +1.1%	156.75 +1.0%	152.35 +0.9%	150.70 +1.7%
NON-RWS	295.00 -1.0%	249.00 -2.0%	230.00 -0.8%	190.00 -1.6%	168.00 -1.2%	159.00 -0.6%	158.00 0.0%	154.00 +1.3%	150.00 +2.0%
RWS Certified	318.00 -0.6%	276.00 +2.9%	254.00 +3.1%	218.00 0.0%	198.00 -5.3%	170.00 -3.5%	166.00 -2.4%	163.00 -1.8%	156.00 -1.3%
RWS PREMIUMS	7.8%	10.8%	10.4%	14.7%	11.3%	6.9%	5.1%	5.8%	4.0%

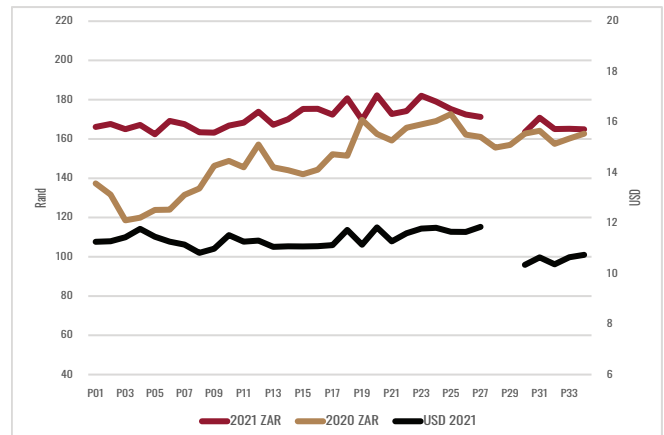
AVERAGE MARKET INDICATOR RWS 180.07 -1.9%

AVERAGE MARKET INDICATOR NON RWS 164.91 -0.8%

RWS 2 YEAR TREND



NON-RWS 2 YEAR TREND



BUYERS LIST	Cat34	& SHARE	BALES (YTD)
Standard Wool SA	2 603	30.64%	64 542
Modiano SA	2 466	29.03%	76 161
Tianyu SA	1 358	15.99%	37 929
Lempriere SA	1 249	14.70%	55 641
Segard Masurel SA	627	7.38%	13 952
New England SA	119	1.40%	3 966
Stucken & Co	73	0.86%	24 368

BROKER LIST	CATALOGUE OFFERING	SOLD (YTD)
BKB	6 746	171 916
CMW	2 609	79 534
JLW	327	5 399
MAS	467	14 514
QWB	640	10 731
VLB	154	5 011

TOP 5	PRODUCER	
R249.00	JD Hancke Bdy Trust, Bethal	RWS
R242.10	Wilgefontein Merinos (Pty) Ltd, Edenburg	RWS
R240.00	Mooibank Bdy (Pty) Ltd, Wakkerstroom	RWS
R239.00	AA Greeff, Stutterheim	RWS
R238.10	JLC du Plessis Trust, Ermelo	RWS

COMMENTS

RWS certified wool in the finer microns found the most support and was as much as 3% dearer, with the overall market following currency and ended a little lower.

The next sale, CAT01, will take place on the 17th of August 2022.